

\$575,000 - 62 Parklane Drive, Strathmore

MLS® #A2236941

\$575,000

3 Bedroom, 3.00 Bathroom, 1,402 sqft
Residential on 0.18 Acres

Aspen Creek, Strathmore, Alberta

Spacious 3 - Bedroom bungalow with over 2500 sq ft of development. Features vaulted ceilings, granite countertops, 2 and a half bathrooms, main floor laundry, and an enclosed sunroom. Enjoy a private backyard with a 16x24 shed and covered patio, backing onto green space and canal. Heated double attached garage. Close to downtown with immediate possession available. Some furnishing negotiable. New RPR

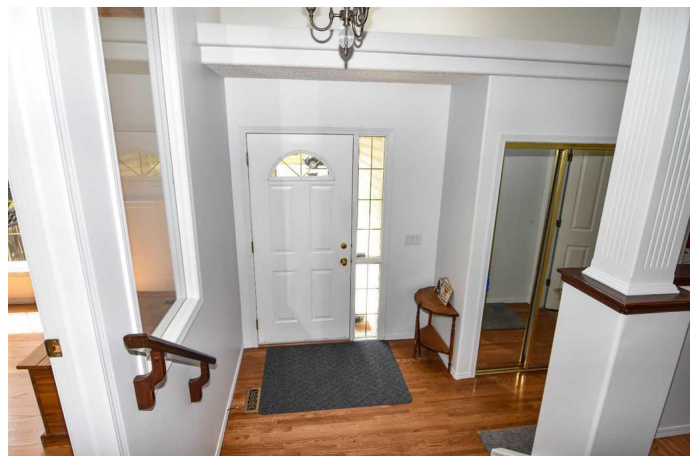
Built in 1998

Essential Information

MLS® #	A2236941
Price	\$575,000
Bedrooms	3
Bathrooms	3.00
Full Baths	2
Half Baths	1
Square Footage	1,402
Acres	0.18
Year Built	1998
Type	Residential
Sub-Type	Detached
Style	Bungalow
Status	Active

Community Information

Address 62 Parklane Drive



Subdivision	Aspen Creek
City	Strathmore
County	Wheatland County
Province	Alberta
Postal Code	T1P 1R2

Amenities

Parking Spaces	2
Parking	Double Garage Attached, Heated Garage, Insulated
# of Garages	2

Interior

Interior Features	Ceiling Fan(s), See Remarks, Vaulted Ceiling(s)
Appliances	Dishwasher, Electric Stove, Garage Control(s), Range Hood, Refrigerator, Washer/Dryer
Heating	Forced Air
Cooling	None
Fireplace	Yes
# of Fireplaces	1
Fireplaces	Gas, Living Room, Mantle, Tile
Has Basement	Yes
Basement	Finished, Full

Exterior

Exterior Features	Other, Private Entrance, Storage
Lot Description	Back Yard, Backs on to Park/Green Space, Creek/River/Stream/Pond, Few Trees, Irregular Lot, Landscaped, Many Trees, No Neighbours Behind
Roof	Asphalt Shingle
Construction	Stone, Vinyl Siding, Wood Frame
Foundation	Poured Concrete

Additional Information

Date Listed	July 4th, 2025
Days on Market	65
Zoning	R1

Listing Details

Listing Office	KIC Realty
----------------	------------

Data is supplied by Pillar 9â„¸ MLSÂ® System. Pillar 9â„¸ is the owner of the copyright in its MLSÂ® System. Data is deemed reliable but is not guaranteed accurate by Pillar 9â„¸. The trademarks MLSÂ®, Multiple Listing ServiceÂ® and the associated logos are owned by The Canadian Real Estate Association (CREA) and identify the quality of services provided by real estate professionals who are members of CREA. Used under license.