

\$494,000 - 32 Tararidge Drive Ne, Calgary

MLS® #A2235060

\$494,000

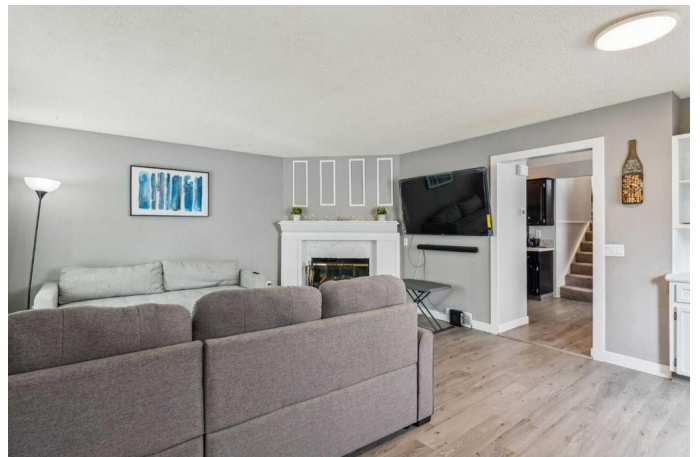
3 Bedroom, 2.00 Bathroom, 917 sqft
Residential on 0.08 Acres

Taradale, Calgary, Alberta

Welcome to this cozy and clean single-family home located in the welcoming and amenity-rich community of Taradale in Calgary, Alberta. This delightful four-level split has been thoughtfully updated over the years and offers a functional and inviting layout, perfect for families, first-time homebuyers, or those looking for a move-in-ready gem.

Step inside and youâ€™re greeted by a spacious living room anchored by a charming wood-burning fireplace, creating a warm and relaxing atmosphere. The kitchen is bright and functional with stainless steel appliances, including a fridge with an ice maker, and a dedicated eating area complete with a ceiling fan for added comfort. Modern colors and finishes run throughout the home, giving it a fresh and welcoming feel. Upstairs, you'll find two generously sized bedrooms and a four-piece bathroom, ideal for restful nights and daily convenience. The third level boasts a large, sun-soaked family room with oversized windows that look out to the east-facing backyard. This versatile space is currently used as a third bedroom, perfect for visiting guests or extended family members and can be easily used as a second living room!

The backyard is a private retreat featuring interlocking patio stones and a low-maintenance design, perfect for enjoying the outdoors without the hassle. A paved



laneway at the rear of the property adds additional convenience and accessibility. Backyard had unlimited possibilities for a backyard oasis or a new garage to fit your needs and car hobbies.

This home has been well cared for and features numerous updates, including new siding (2021), roof (2021), new dishwasher (2024), updated lower-level bathroom (2017), updated flooring (2025), and a new side door (2025), providing peace of mind for years to come.

Located close to everything you need, including public transportation, the Genesis Centre, schools, parks, and shopping. Just minutes from Saddletowne Circle with its array of grocery stores, restaurants, and services, and with quick access to Metis Trail, Stoney Trail, and Calgary International Airport, this home offers the perfect balance of suburban tranquility and urban connectivity. Clean, cute, and full of charm—this Taradale beauty is ready to welcome you home. Book now for your own private viewing.

Built in 1983

Essential Information

MLS® #	A2235060
Price	\$494,000
Bedrooms	3
Bathrooms	2.00
Full Baths	2
Square Footage	917
Acres	0.08
Year Built	1983
Type	Residential
Sub-Type	Detached
Style	4 Level Split

Status Active

Community Information

Address 32 Tararidge Drive Ne
Subdivision Taradale
City Calgary
County Calgary
Province Alberta
Postal Code T3J 2R3

Amenities

Parking None, On Street

Interior

Interior Features Ceiling Fan(s), See Remarks
Appliances Dishwasher, Dryer, Electric Stove, Range Hood, Refrigerator, Washer, Window Coverings
Heating Forced Air
Cooling None
Fireplace Yes
of Fireplaces 1
Fireplaces Wood Burning
Has Basement Yes
Basement Full, Unfinished

Exterior

Exterior Features Private Yard
Lot Description Back Lane, Back Yard
Roof Asphalt Shingle
Construction Vinyl Siding, Wood Frame
Foundation Poured Concrete

Additional Information

Date Listed June 27th, 2025
Days on Market 63
Zoning R-G

Listing Details

Listing Office Grand Realty

Data is supplied by Pillar 9â„¢ MLS® System. Pillar 9â„¢ is the owner of the copyright in its MLS® System. Data is deemed reliable but is not guaranteed accurate by Pillar 9â„¢. The trademarks MLS®, Multiple Listing Service® and the associated logos are owned by The Canadian Real Estate Association (CREA) and identify the quality of services provided by real estate professionals who are members of CREA. Used under license.