

\$629,900 - 133 Parklane Drive, Strathmore

MLS® #A2219760

\$629,900

3 Bedroom, 3.00 Bathroom, 1,310 sqft
Residential on 0.13 Acres

Aspen Creek, Strathmore, Alberta

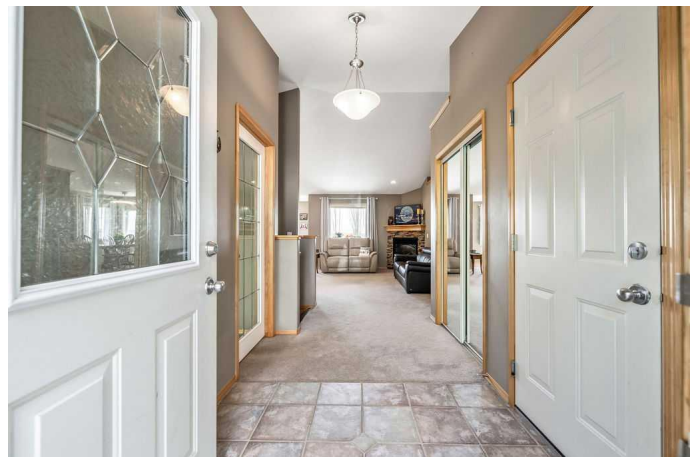
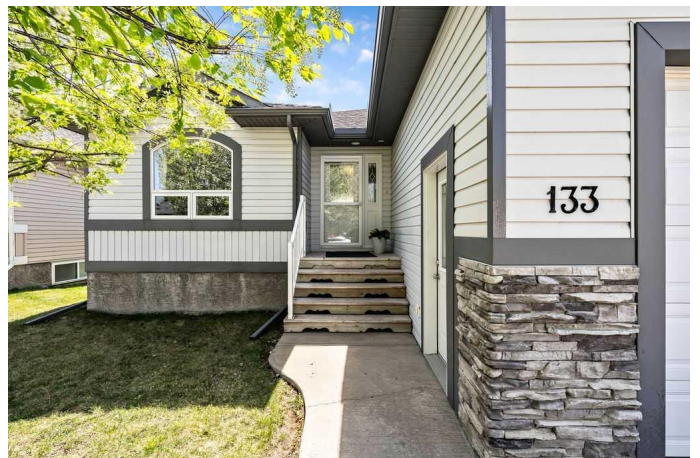
In one of Strathmore's most established neighborhoods, this walkout bungalow offers a rare blend of comfort, charm, and convenience. Backing onto a peaceful greenbelt and just steps from schools, shopping, walking paths, and downtown, the location is ideal for families seeking both serenity and accessibility.

The main floor spans over 1,300 square feet, featuring an open-concept layout with vaulted ceilings that enhance the sense of space. A well-appointed kitchen with maple cabinetry and a movable island flows effortlessly into the dining area and cozy living room, where a gas fireplace adds warmth and ambiance. South-facing windows bathe the space in natural light throughout the day.

The primary bedroom includes a 4-piece ensuite and walk-in closet, while a second bedroom, full bathroom, large office, and main-level laundry complete the floor.

Downstairs, the fully finished walkout basement is designed with entertaining in mind. Exposed beams, barn doors, luxury vinyl plank flooring, and in-floor heating create a stylish and comfortable environment. This level offers a spacious TV room, separate games area, an additional bedroom, full bathroom, and ample storage.

Step outside to a beautifully landscaped



backyard oasis. Two semi-private decks, one accessible from the primary suite overlooking the greenbelt, while a staircase leads to the fully fenced yard. Mature trees, a gas BBQ hookup, and a large shed enhance the outdoor living experience. Call to book your viewing today!

The front of the home boasts excellent curb appeal with manicured landscaping, a double attached garage, and additional driveway parking. Recent updates include a new roof and eavestroughs in 2018.

This well-maintained home is move-in ready and offers a perfect balance of small-town charm and modern amenities. With 11 schools, multiple recreation centers, and over 100 businesses, Strathmore provides a vibrant community for families to thrive . Don't miss the opportunity to make this exceptional property your new home.

Built in 2003

Essential Information

MLS® #	A2219760
Price	\$629,900
Bedrooms	3
Bathrooms	3.00
Full Baths	3
Square Footage	1,310
Acres	0.13
Year Built	2003
Type	Residential
Sub-Type	Detached
Style	Bungalow
Status	Active

Community Information

Address	133 Parklane Drive
---------	--------------------

Subdivision	Aspen Creek
City	Strathmore
County	Wheatland County
Province	Alberta
Postal Code	T1P 1V8

Amenities

Parking Spaces	4
Parking	Concrete Driveway, Double Garage Attached, Garage Door Opener, Garage Faces Front
# of Garages	2

Interior

Interior Features	Ceiling Fan(s), Kitchen Island, Laminate Counters, Open Floorplan, Pantry, Storage, Vaulted Ceiling(s), Walk-In Closet(s)
Appliances	Dishwasher, Electric Stove, Microwave, Refrigerator, Washer/Dryer, Window Coverings
Heating	In Floor, Forced Air, Humidity Control, Natural Gas
Cooling	None
Fireplace	Yes
# of Fireplaces	1
Fireplaces	Gas, Living Room, Mantle, Stone
Has Basement	Yes
Basement	Finished, Full, Walk-Out

Exterior

Exterior Features	Private Yard
Lot Description	Back Yard, Few Trees, Front Yard, Landscaped, Lawn, Street Lighting, Greenbelt
Roof	Asphalt Shingle
Construction	Brick, Vinyl Siding, Wood Frame
Foundation	Poured Concrete

Additional Information

Date Listed	May 9th, 2025
Days on Market	38
Zoning	R1

Listing Details

Listing Office	RE/MAX First
----------------	--------------

Data is supplied by Pillar 9â„¢ MLS® System. Pillar 9â„¢ is the owner of the copyright in its MLS® System. Data is deemed reliable but is not guaranteed accurate by Pillar 9â„¢. The trademarks MLS®, Multiple Listing Service® and the associated logos are owned by The Canadian Real Estate Association (CREA) and identify the quality of services provided by real estate professionals who are members of CREA. Used under license.