

\$400,000 - 331, 950 Centre Avenue Ne, Calgary

MLS® #A2210197

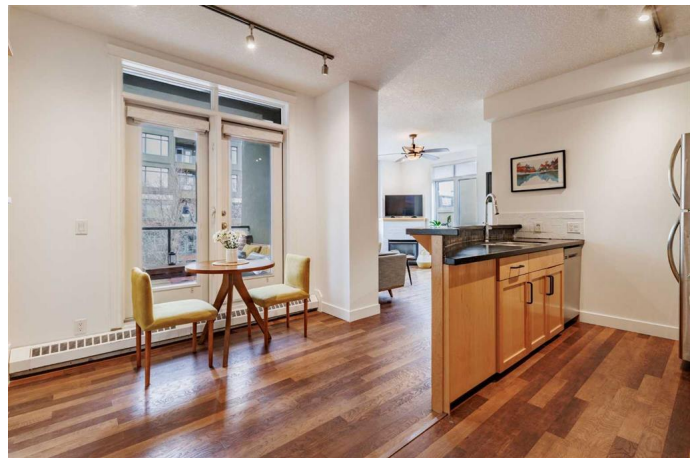
\$400,000

2 Bedroom, 2.00 Bathroom, 868 sqft

Residential on 0.00 Acres

Bridgeland/Riverside, Calgary, Alberta

Welcome to this beautifully upgraded 2-bedroom, 2-bathroom apartment offering 870 sq ft of well-designed living space in one of Calgary's most vibrant inner-city communities. Located in The Pontefino II, a concrete building with 9-foot ceilings, this home provides a quiet sense of calm in the heart of the city. Step inside to find new luxury vinyl plank flooring throughout the living and bedroom areas, adding warmth and durability to the space. The primary suite features large West-facing windows, while a walk in closet completes the 4-piece ensuite bathroom. The second bedroom includes a pass-through door to the main bathroom, boasting versatility as a living quarter or an office space. The open-concept living room features a cozy gas fireplace, while the kitchen has been refreshed with a new stove and dishwasher (2023). A new smart stacking washer and dryer (2023) round out the upgrades, providing both style and efficiency with additional storage in the laundry space. Outdoor eating is no problem with the West facing patio which includes a gas hookup for barbeques. The layout is perfect for roommates, couples, or those working from home, with each bedroom offering privacy and ample storage. Enjoy the convenience of titled underground parking with a car wash, bicycle storage, additional secured storage, a serene common area courtyard, and the unbeatable location: right across from the Bridgeland-Riverside Community Association and Murdoch Park, and just a



one-minute walk to shops, cafes, and local services. The Bridgeland C-Train station is a short 5-minute stroll away, making downtown commuting effortless. Whether you're a working professional, investor, or someone seeking a lively urban lifestyle, this is an opportunity to own in one of Calgary's most desirable neighborhoods.

Built in 2006

Essential Information

MLS® #	A2210197
Price	\$400,000
Bedrooms	2
Bathrooms	2.00
Full Baths	2
Square Footage	868
Acres	0.00
Year Built	2006
Type	Residential
Sub-Type	Apartment
Style	Single Level Unit
Status	Active

Community Information

Address	331, 950 Centre Avenue Ne
Subdivision	Bridgeland/Riverside
City	Calgary
County	Calgary
Province	Alberta
Postal Code	T2E0P3

Amenities

Amenities	Elevator(s), Secured Parking, Storage, Trash, Visitor Parking, Community Gardens, Car Wash, Garbage Chute
Parking Spaces	1
Parking	Titled, Underground

Interior

Interior Features	Breakfast Bar, Ceiling Fan(s), Closet Organizers, Storage
Appliances	Convection Oven, Dishwasher, Electric Stove, Garage Control(s), Garburator, Microwave Hood Fan, Washer/Dryer Stacked, Window Coverings
Heating	Fireplace(s), Radiant
Cooling	None
Fireplace	Yes
# of Fireplaces	1
Fireplaces	Family Room, Gas
# of Stories	6

Exterior

Exterior Features	Uncovered Courtyard
Construction	Concrete

Additional Information

Date Listed	April 12th, 2025
Days on Market	22
Zoning	DC

Listing Details

Listing Office	Real Broker
----------------	-------------

Data is supplied by Pillar 9â„¢ MLSÂ® System. Pillar 9â„¢ is the owner of the copyright in its MLSÂ® System. Data is deemed reliable but is not guaranteed accurate by Pillar 9â„¢. The trademarks MLSÂ®, Multiple Listing ServiceÂ® and the associated logos are owned by The Canadian Real Estate Association (CREA) and identify the quality of services provided by real estate professionals who are members of CREA. Used under license.